

# Rotary District 6600

***Education is the most powerful weapon which you can use to change the world.***

**-Nelson Mandela**



Everything in this schoolroom was donated to the community of Nuevo San Juan, Orange Walk District, Belize during Mission 6



I.T. professional Elvis Shuneh checks out computers at the Savanna-La-Mar Preschool, Westmoreland Province during Mission 1 to Jamaica



***Education is for improving the lives of others and for leaving your community and world better than you found it.***

**-Marian Adelman**

**Resource Centers International** is a project of the **Rotary Clubs of District 6600**, and **MESA** its international arm.

**Our mission** is to establish Resource Centers in Infant and Preschools and libraries in communities that lack basic educational resources.

The **mission objectives** are to:

- Coordinate all activities with local Rotary Clubs and Ministries of Education.
- Outfit centers with equipment and supplies.
- Give Workshops to teachers and parents on how to get most benefit from donated equipment and supplies.
- Provide continued support over time.

***Next in importance to freedom and justice is popular education, without which neither freedom nor justice can be permanently maintained.***

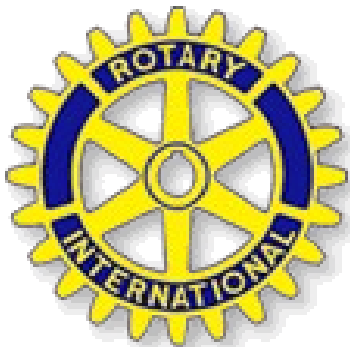
**-James A. Garfield**



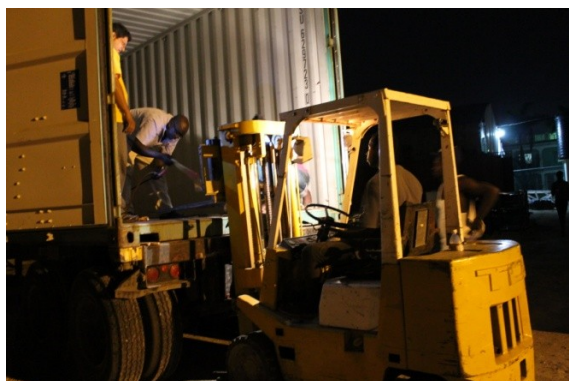
Preschool education professional, Elana Honig conducting a workshop with parents and children at the Trinidad school, Belize.



The objective of Preschool professional Suzanne Saunders during Mission 1 to Jamaica was to evaluate their school system so that RCI can better meet the needs of the preschools when conducting future missions. Preschool education is universal and free in Belize and Jamaica.



The Rotary Club of Savanna-La-Mar helped unload the container during Mission 1, Jamaica.



The container arrived late and we all worked well into the night. In this, as in all missions everything arrived with minimal damage.

**PUTTING A MISSION TOGETHER**

All the equipment and supplies for a mission are collected and stored in the MESA Warehouse in Findlay, Ohio. Shipments are sent via container to Jamaica or Belize where everything is stored until the mission team arrives. Approximately 20 sites are set up during each mission.



Loading a container at the **MESA** Findlay warehouse

### **What we send to each center**

<b>Books</b>	<b>Tables/Chairs</b>
<b>Computers</b>	<b>Sports</b>
<b>Equipment</b>	
<b>Toys and games</b>	<b>Exercise flooring</b>
<b>Televisions</b>	<b>VCR/VHS tapes</b>
<b>Shelving</b>	<b>Overhead Projectors</b>

**Almost everything we send is donated!** Our biggest expense is getting everything to where it needs to go. Of our annual budget, 75% is for shipping and transportation.

**YOU CAN BE A PART OF A  
WORLDWIDE TEAM!**

**FOR MORE INFORMATION GO TO  
OUR WEBSITE AT:**

**resourcecentersinternational.org**

Our contacts:

#### **In the United States:**

Mel Honig, U.S.A. Project Coordinator  
**[gaimel75@yahoo.com](mailto:gaimel75@yahoo.com)**  
 419 843 4459 (h)  
 567 686 3406 (c)

#### **In Jamaica:**

Hilda Hibbert, Jamaica Project Coordinator  
**[hmhibbert@yahoo.com](mailto:hmhhibbert@yahoo.com)**

#### **In Belize:**

Eleanor Carillo  
**[ecarillo.moe@gmail.com](mailto:ecarillo.moe@gmail.com)**

"The Resource Center International Theme Song" by Laila Salins

*"Resource Centers International  
 One by one, strengthening  
 communities,  
 Resource Centers International  
 Building new opportunities."*

*Rotarians, wherever they go,  
 Honoring service above self -  
 Resource Centers International  
 Together we can make this vision  
 grow."*